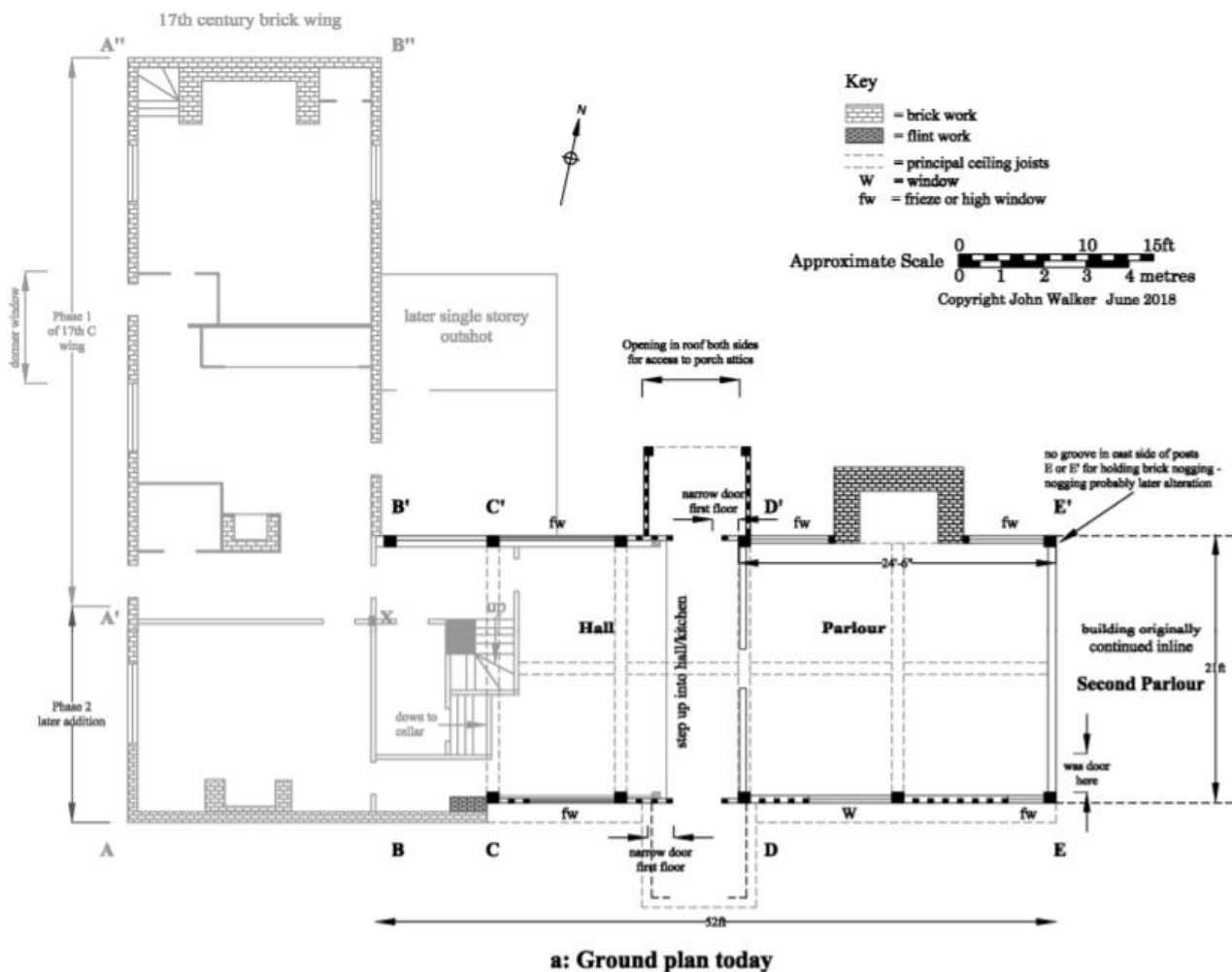


## Abbey Farm 6.2.22



HOXNE CROSS STREET TM 17 NE 8/66 Abbey Farmhouse 29.7.55 GV II\* Farmhouse, on site of Benedictine Priory. East wing is the surviving part of a large house of c.1540, said to be for Sir Richard Gresham. Early C17 cross-wing to west, extending to north to form L-shape plan. Early C20 restoration. East wing. Timber framed: exposed studding with herringbone brick nogging, some parts restored. Double-curved braces to first floor. Plaintiled roof. 2 storeys and attic. South wall has a jettied first floor supported on plain brackets springing from carved buttress-shafts; the bressummer has leaf-trail carving. Various cavetto mullioned windows with diamond-leaded glass and moulded sills: most are good reproductions but some are originals. Evidence for a large mullion and transom hall window (half blocked) and for projecting upper windows. Cross-entry has 4-centre arched doorway and original plank door with moulded outer face. To the north is a particularly fine original gabled porch with unrestored brick nogging: open entrance with shallow 3-centred arch, reached by 3 stone steps; within are the original doorway, door and 3-light window above. Against the north wall is a massive C16 stack with crowstepped shoulders and 3 original diamond shafts. Cross-wing. Red brick, laid in Flemish bond; plaintiled roof. 2 storeys and attic. North gable is crowstepped; both gables have tumbling. To west is a range of 5 C19 3-light casement windows under segmental arches; 6-panelled raised and fielded door. 2 stacks, one at north gable end: each has 2 C19 shafts set diamondwise, with star caps. Interior. The hall has a fine ceiling with roll-moulded cross-beams. Much early C17 oak panelling, probably mostly C20 insertions. Good hall fireplace with moulded 4-centred brick arch and small shields in the spandrels. Above the fireplace is part of a Jacobean overmantel, brought from elsewhere and altered in C20. Well stair with turned balusters and moulded handrail, probably of early C17 date. Hall chamber has moulded stuccoed fireplace, the spandrels enriched with a shield and foliage. The adjacent room has an altered fireplace with stone jambs, each containing a shield within a square panel. This room has complete C16-C17 panelling. First floor of cross-wing has a C17 plank and muntin partition forming a side passage. Roof over C16 range has one row of clasped purlins and 2-way wind-bracing; one bay has evidence for original dormer windows. Traces of moat to east.

## 17<sup>th</sup> Century brick wing (c1640) ground floor



North facing bressummer with 8 burn marks and some V shaped marks.



## Parlour



2 burn marks and incised lines on south window by the door. To the left of the fireplace on the North side are two clear overlapping compass drawn circles and a third fainter one, 8cm in length and cut into the 17<sup>th</sup> century panelling. On the east wall in the 17<sup>th</sup> century panels are 5 interlocking circles crossed out with a saltire cross about 20cm in size.

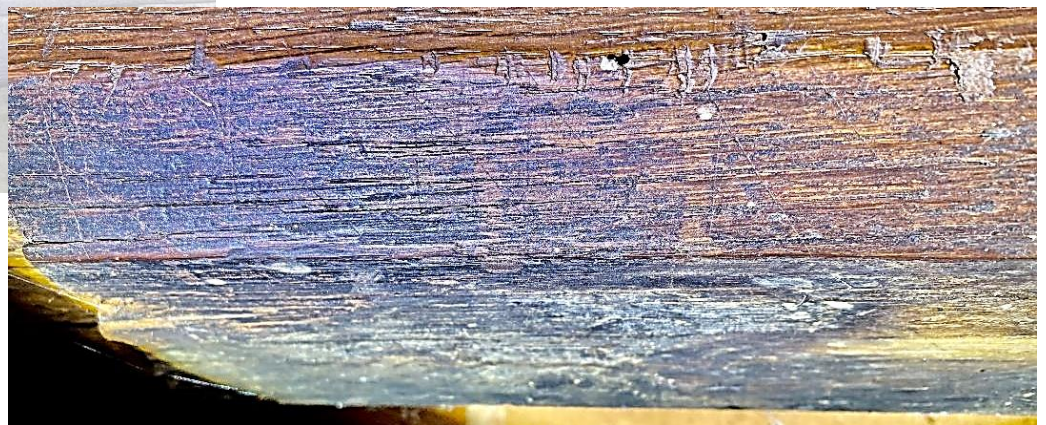




## Upstairs

Panelled bedroom

Candles burns on bressummer above fireplace. A few zig-zag patterns along bevelled edge but difficult to distinguish.





## Second room – carved panel above fireplace.

Clear compass drawn circle



Hallway, first floor, on panel – compass drawn circle 12cm in diameter



**Attic room** on the door into loft space. 12 circles inside each other. Largest circle 18cm diameter. Overlaps with a similar sized single circle below it. Situated above a cat-flap leading into attic. Marks clear by naked eye but faint in photo.



**Loft space** – a number of small circular punch marks clustered on a single beam behind the door with the circles and cat flap. Each mark, less than 5mm in diameter.



In summary – there are lots of circular marks with varying degrees of complexity, often clustered and overlapping. The most complex has been cross out with a saltire cross. Likely to be 17<sup>th</sup> century or 18<sup>th</sup> century in origin. Burn marks occur around some bressummers downstairs and upstairs, 17<sup>th</sup> century. Also, some around windows and the odd one on a panel. The house lacks Marian marks but they may be present in the first-floor panelled bedroom on the bressummer but are indistinct. No doubt more marks will be found.



